



Installation instructions for your MFD28 in the Toyota GT86

Preface

Thank you for purchasing your CANchecked display for the Toyota GT86.

During the development of the product, we paid attention to the highest fitting accuracy and quality. The display has been test-fitted with these installation instructions by several test persons and continuously improved to ensure that you will have no problems during the conversion.

If you have any feedback, criticism or change requests for us, it is best to send us an e-mail to info@canchecked.de.



General notes

The display is a very sensitive device. Extreme caution should be exercised. Avoid any strong pressure on the casing or the display itself.

CANchecked accepts no liability whatsoever for this conversion or for any damage caused during the conversion or during operation. The instructions have been prepared to the best of our knowledge and belief.

The conversion time is approx. 1.5h for an experienced mechanic.

Tools needed

- Assembly tool (sold separately)

1) Removing the trim

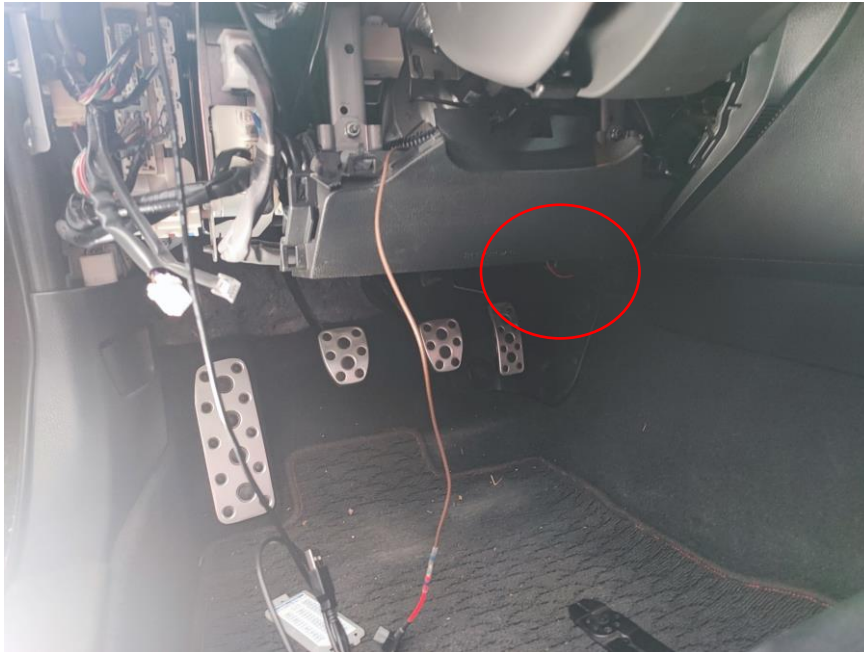
Open the driver's door and remove the side cover of the dashboard.

Use the installation tool to carefully prise out the panel.

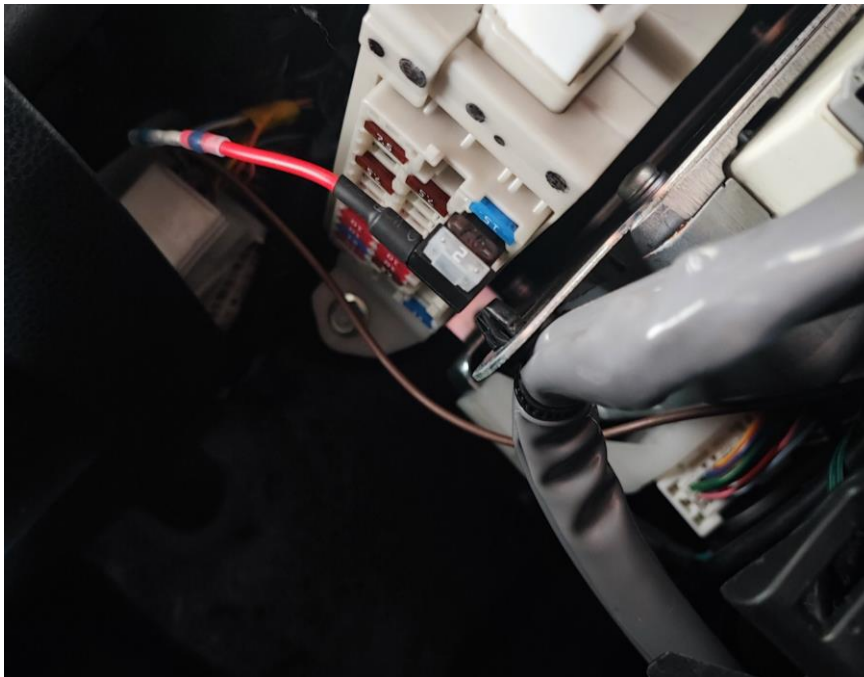


You can pull off the fairing and put it aside for the time being.

Now you see on the right, circled in red, the OBD connector to which you will later connect your cable. On the left-hand side you will see the fuse box where you will later tap the power. Please refer to the owner's manual to find out where the ignition plus is located.



As an example, you can tap the positive cable here:



2) Dismantle the nozzle and prepare it for assembly.

Next, take the assembly tool again and go under the frame of the nozzle and carefully lever it off. The frame is only clipped and must be transferred to the new orifice.



3) Laying cables

The USB cable should be placed in the glove compartment or behind the dashboard cover, where you can always reach it if necessary.

Then connect the supplied cable to the OBD connector and to the fuse carrier.

Now, before you reassemble everything in reverse order, briefly switch on the ignition and check the function of the display. If this is the case, you can complete the vehicle and you are done.

We hope you have as much fun with your CANchecked display as we do. If you have any questions, please feel free to contact us by e-mail at info@canchecked.de.

We also have a support group on Facebook where other customers can help and share their experiences:

<https://www.facebook.com/groups/CANcheckedSupport/>