



# Quickstart Guide MFD15

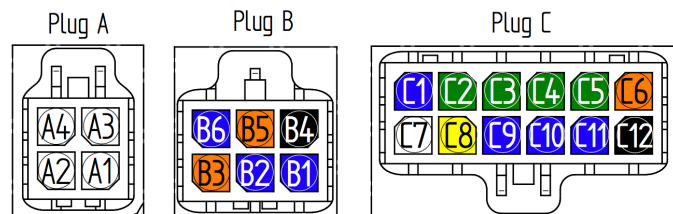
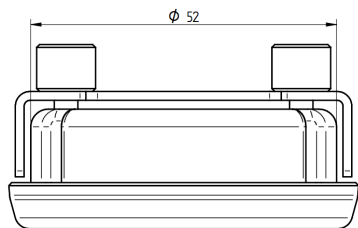
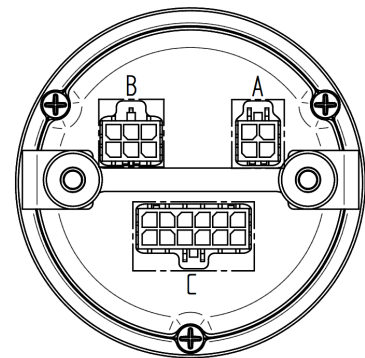
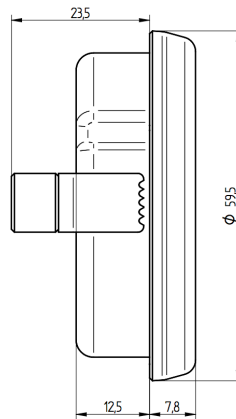
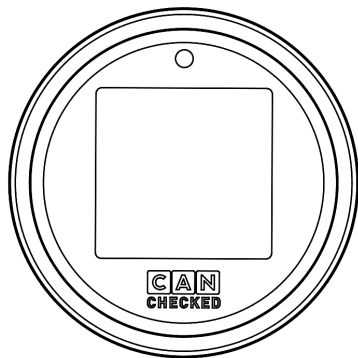
## Provided accessories

- Plug A with encoder
- Plug B with power adapter and programming adapter
- Plug C
- Additional cables for analogue inputs
- Mounting bracket and knurled screws

## More Informationen

More information on the display and other products and accessories you can find online at:

[www.canchecked.de](http://www.canchecked.de)  
[www.canchecked.de/mfd15/](http://www.canchecked.de/mfd15/)



Plug A: Molex 43025-0400  
Crimp: Molex 43030-0001

Plug B: Molex 43025-0600

Plug C: Molex 43025-1200

PLUG A	A1	A2	A3	A4
	Encoder			

PLUG B	B1	B2	B3	B4	B5	B6
	RX	TX	5V	GND	5V	DTR

PLUG C	C1	C2	C3	C4	C5	C6	C7	C8	C9	C10	C11	C12
	MPP 1*	AIN1	AIN2	AIN3	AIN4	5V	CAN H	CAN L	MPP 2*	MPP 3*	MPP 4*	GND

\*future application

## Installation

When installing the display, you need to pay attention to a neat cabling. The power cable needs to be fused with 5A. The measurements for the mounting hole and the screw holes can be found in the upper drawing.

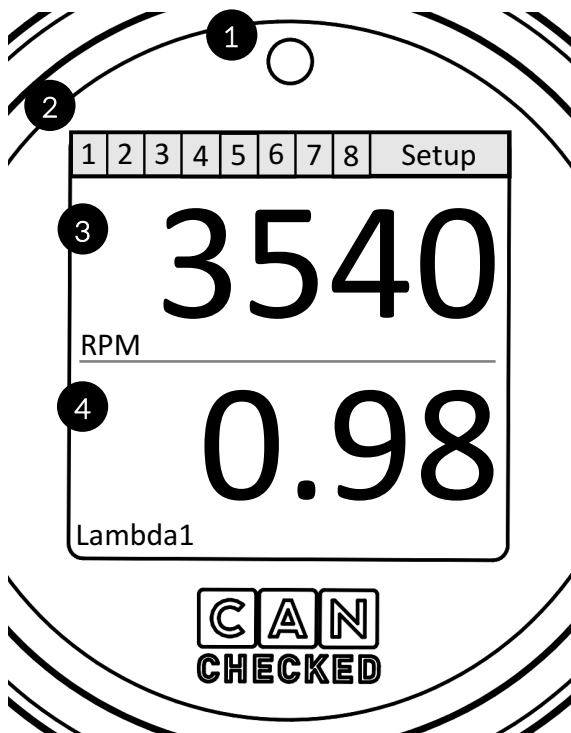
In addition, only the can bus cables (high/low) needs to be connected.

Please make sure, to tighten the orange screws for the bracket carefully. Otherwise you will damage the casing.

## Implementation

After the start-up, the splash screen appears with the logo and an internal component test (can bus) is run.

The display starts with the last selected view. If you press the encoder, the display stops and shows a bar in the upper area.



- 1) Shift light or warning LED (RGB)
- 2) Menu bar (if display is stopped)
- 3+4) current data display depending on the selected view

If you rotate the encoder, a red rectangle is shown with the current position. With another press, you select the action:  
1-8: change view  
Setup: Setup / Menu

3+4: Change the sensor

The view of the data is selected in menu under "views". Choose between: single value, 2 values, 4 values, 6 values, bargraph, YT diagram, single needle, double needle, bar+2way

On questions regarding accessories or functionality please get in contact with us via our homepage ([www.canchecked.de](http://www.canchecked.de)) or via email ([info@canchecked.de](mailto:info@canchecked.de)).